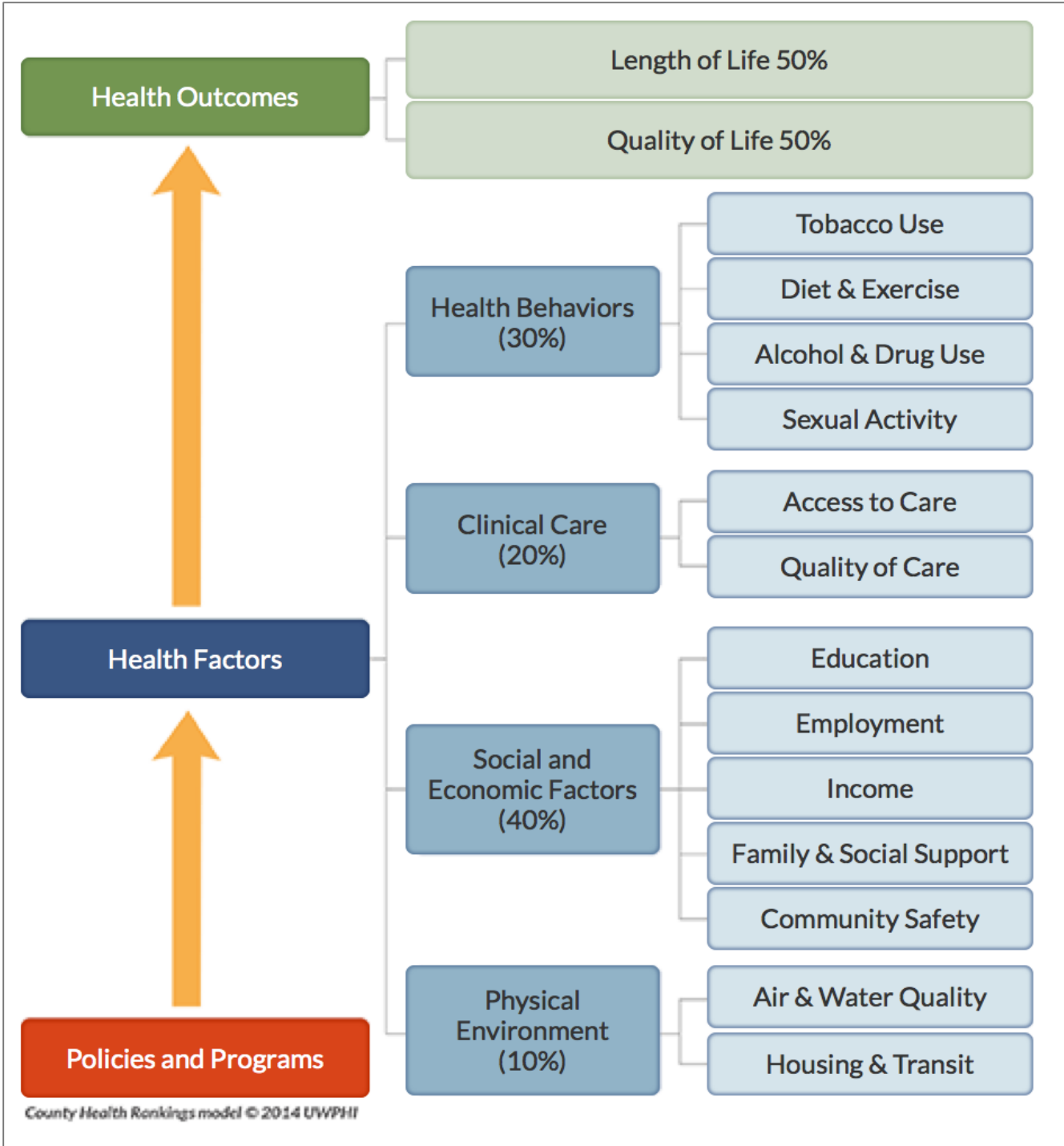


# Factors of Health & Well Being



## Durham Community Health Priorities by Race/Ethnicity

	African-American or Black	American Indian or Alaska Native	Asian	White	Other	Hispanic
Percent Uninsured (2015)	12.9%	9.7%	11.8%	6.2%	14.4%	48.9%
Percent below 100% of Federal Poverty Level (2015)	21.3%	*	13.2%	7.8%	12.0%	28.1%
High School Graduation Rate (2016)	81.5%	77.8%	93.0%	89.4%	77.8%	77.3%
Percent of population with a Bachelor's Degree or Professional Degree (2015)	31.9%	*	73.2%	61.0%	41.9%	9.1%
Percent of DPS high school students who were overweight or obese (2015)	32.1%	**	**	19.0%	29.3%	33.4%
Percentage of DPS high school students who have taken prescription drugs without a doctor's prescription (2015)	14.1%	**	**	16.8%	19.0%	14.4%
HIV Incidence in Durham County by Race and Ethnicity, 2011-2015	43.7	*	*	6.3	*	20.1
Syphilis Incidence (Primary, Secondary, and Early Latent) in Durham County by Race and Ethnicity, 2011-2015	36.5	0.0	**	9.5	30.5	10.3
Heart Disease Mortality Rate per 100,000 population (2011-2015)	158.7	*	**	119.7	*	62.2
Cancer Mortality Rate per 100,000 population (2011-2015)	203.8	*	**	152.3	120.3	81.7
Diabetes Mortality Rate per 100,000 population (2011-2015)	29.6	0.0	**	17.4	*	*
Infant Mortality Rate per 1000 live births (2011-2015)	13.9	**	**	3.9	*	3.4
Median income in the past 12 months for the population 16 years and over in Durham County, 2015	\$20,988	\$20,470	\$39,509	\$42,064	\$42,620	\$23,059

\*Data are suppressed to maintain confidentiality due to counts less than 20.

\*\*Data are not available for the respective race or ethnicity.

Sources: U.S. Census Bureau American Community Survey, 2015 Durham County Youth Risk Behavior Survey, NC Center for State Statistics 2017 County Health Data Book